

Diagnostic Radiology Residency Program



360223_NH_RAD_Residency_Progm_BOOK_F-22

Norwalk Hospital
34 Maple Street
Norwalk, CT 06856

Call us at
(203) 852-2000

TTY/Accessibility
(203) 899-5016

nuvancehealth.org

Greetings from the program director

Thank you for your interest in the Norwalk Hospital Diagnostic Radiology Residency program. We appreciate this opportunity to introduce you to our residents and faculty, and to show you our hospital and department.

Our program has many unusual features, which are detailed in the following pages. We are proud of our tradition of excellence in education, and our reputation for outstanding clinical training.

Please review the following materials to learn more about our community program. If you have additional questions, please feel free to contact our Program Coordinator, Anila Dalipi, the residents, or myself (our contact information can be found on page 17).

Sincerely,
Francis T. Flaherty, MD



Francis T. Flaherty, MD
Program Director

Current residents, faculty and staff



Back row, left to right: A. Dalipi, A. Colucci, D. Moliva, R. Narbutas, L. Melchior, E. Gillis, M. Homsj, E. Reiner, F. Flaherty, S. Carter, L. du Preez, S. Wojtkiewicz, D. Jin, K. Nowitzki **Front row:** G. Boroumand, M. Hollander, R. Joseph, B. Khazai, B. Funk, S. Bakhru

Learn more about our current residents, faculty and staff beginning on page 12.

Program structure and philosophy

Norwalk Hospital's residency in diagnostic radiology provides a clinically intense but highly supportive environment for resident training, which is essential to our educational philosophy and approach to teaching. The program consists of 10 radiology residents, three alternating with two in each of the four years. The teaching faculty is composed of 16 fellowship-trained radiologists.

The formal didactic education of our residents is extensive. In brief, the morning and noon lectures from our attending radiologists are excellent, with education further strengthened by several invited guest lecturers from major institutions such as Yale, Columbia, Thomas Jefferson and Montefiore. Residents are involved in preparing and presenting weekly tumor boards, an invaluable learning experience and great preparation for fellowship. We sponsor our residents to attend the American Institute for Radiologic Pathology (AIRP) to learn radiologic-pathologic correlation in preparation for the CORE board exam. In addition to the board preparation provided by our faculty and guest lecturers, our residents also attend multiple radiology board review and physics review courses.

In the absence of fellows, residents gain a primary role in image interpretation, patient management, decision-making and the performance of procedures. This front-line position enables our residents to acquire substantial clinical skills early on in their training. For this reason, our graduates are eagerly sought for fellowships and attending positions in both academic and private practice settings. Our residents have gone on to fellowship training programs at numerous academic medical centers, leading to successful careers in both academia and private practice.

Sincerely,

Seema Bakhru, MD



Seema Bakhru, MD
Chair of the Department of Radiology



University affiliations

Norwalk Hospital is an outstanding, comprehensive community teaching hospital providing services to a diverse patient population. We are able to provide excellent comprehensive clinical training in diagnostic radiology. While Norwalk Hospital has an inpatient pediatric unit with outstanding staff pediatricians and a NICU, acutely sick children are often referred

to tertiary care centers. For this reason, our residents perform their pediatric rotations at the Maria Fareri Children's Hospital at Westchester Medical Center.

We also have a longstanding relationship with Yale University. While we are able to provide a broad exposure to clinical radiology, our residents also have the opportunity to perform elective rotations at Yale in neuroradiology and other subspecialties.

Given our highly-specialized medical staff, our broad base of clinical pathology and our relationships with Westchester and Yale, we feel that we have created a program that includes the best of both worlds: the outstanding clinical training a community hospital can provide along with enough university experience to complete a well-rounded training curriculum.



Educational curriculum

The first few weeks of initial training include a mix of didactics dedicated for the first-year radiology residents. These include lectures in the basics of radiology, radiation protection, handling of emergency situations (particularly contrast reactions), ultrasound and fluoroscopy. The clinical rotations are in four-week blocks incorporating the usual subspecialties of diagnostic radiology. Our curriculum is organ-system based with core rotations in musculoskeletal imaging, neuroradiology, interventional radiology, body imaging, nuclear medicine, ultrasound, mammography and fluoroscopy.

Residents obtain comprehensive pediatric radiology training at the nearby Maria Fareri Children's Hospital of Westchester Medical Center.

A one-month American Institute for Radiologic Pathology (AIRP) rotation is typically scheduled during the third year prior to the board exam.

In the fourth year, residents have elective blocks which can be used for advanced clinical rotations or research. It should be noted that clinical rotations are selected and arranged in order to facilitate and enhance each resident's training and education; they are not based on fulfilling necessities of clinical coverage.

After passing the CORE board exam, residents may elect to perform one or more mini-fellowships in subspecialty areas such as advanced neuroimaging, musculoskeletal MRI and advanced body MRI.

There are two learning conferences daily, at 7:30 am and 12 pm. These are a mix of didactic lectures and case conferences. Most conferences are given by Norwalk Hospital faculty, but we also incorporate numerous guest lecturers, many of whom are luminaries in their fields. We do this both for unusual or rare pathology, such as congenital heart disease, and for exposure to the approaches used at other institutions for more common pathology.

A comprehensive course in radiation physics and radiation biology is integrated into the daily conferences.

Interdisciplinary conferences with other departments are also held regularly, usually on a monthly basis. We currently have joint conferences with pulmonary medicine, hepatobiliary and gastrointestinal surgery, gyn-oncology, heme-oncology, neurosurgery, breast oncology and gastroenterology. Residents prepare and present cases for these interdisciplinary conferences on a weekly or monthly basis.

Additional program information



Research and investigation

We feel that participation in research is a crucial component of residency training. While four years is a relatively short time to become a competent clinical radiologist and to receive board certification, it is also clear to us that participation in research enhances critical thinking and results in a more well-rounded physician. While we strongly encourage scholarly pursuits, our formal requirement is that each resident prepare at least one case report, abstract or paper suitable for publication and a QI/QA project during their four years of training. In practice, most residents do significantly more than this and some have prepared and published numerous papers and projects.

Time is made available for research and investigation during dedicated research electives.

Norwalk Hospital will pay the travel and lodging expenses for residents attending conferences for purposes of presenting a paper or exhibit.

Norwalk Hospital has an Interdisciplinary Research Committee overseeing and coordinating projects involving various departments. In addition, we have a network research advisor, a hospital-wide research coordinator, a biostatistician and other support staff as needed.

On-call

On-call is performed with contemporaneous attending oversight. Call is front-loaded to give younger residents more experience, and allowing less call for more senior residents studying for their board examinations. We believe that on-call experience is necessary for training but that call should not be exhausting or abusive. There is overnight attending coverage with the residents able to leave the hospital at 10 pm on weekdays, and 8 pm on weekends. There is no night-float rotation.

Outpatient center

The Diagnostic Radiology Department of Norwalk Hospital consists of the facilities at Norwalk Hospital itself and two outpatient facilities, the Breast Center at iPark and Imaging and Radiology at Norwalk, Main Avenue. The Department, together with the outpatient facilities, perform over 120,000 examinations each year. Training at these two different facilities (inpatient and outpatient) enables residents to experience contrasting types of patients and diseases. This combination serves to broaden the resident's clinical experience and practical skills.

Over the last several years, both the inpatient and outpatient departments completed major physical and technological renovations. Both centers are completely digital (film-less), with voice recognition transcription, and PACS, RIS and CAD enhanced systems. The combined centers operate a total of four CT scanners, four MRI scanners, four digital mammography units, multiple digital fluoroscopy suites, three nuclear medicine cameras, PET/CT and state-of-the-art interventional facilities. We also have multiple Vitrea workstations, which enable us to evaluate both CT and MRI images in multiple dimensions and also create 3-D model reconstructions.

The Breast Center at iPark was designated a National Showcase by GE Healthcare for its "exceptional clinical expertise in breast health, use of the latest technology and outstanding patient care." The center was the only facility in Connecticut to receive this prestigious award. Both centers are accredited by the American College of Radiology.

PGY-1 year

Norwalk Hospital permits many options for the required PGY-1 (internship) year. Any ACGME-accredited approved clinical year is acceptable. Many residents have completed their PGY-1 year in medicine or surgery, while some have completed transitional years.

Vacation and conference time

Annually, each resident receives four weeks of vacation, in addition to one optional week of continuing medical education. Residents are solely in charge of scheduling their vacation time as they please with few restrictions.

Additionally, third-year residents are allotted time off to attend two board review courses of their choice that are reimbursed by the department. Residents are also allotted time off for fellowship and job interviews.

Salary and benefits

- Norwalk Hospital resident salaries are highly competitive based on the market trends of the coastal Northeast. This enables residents to afford housing or modern apartments close to the hospital, many within walking distance. Additionally, parking is free at the hospital, including a covered parking ramp.
- Post-graduate year (PGY) level and salary amount
 - PGY-2:** \$76,156
 - PGY-3:** \$80,372
 - PGY-4:** \$84,391
 - PGY-5:** \$87,767

- Medical, dental, life and disability insurance are provided for the house staff and their families.
- All first-year radiology residents receive from the faculty a comprehensive set of radiology textbooks deemed important for learning general radiology and passing the CORE exam.
- For the American Institute for Radiologic Pathology (AIRP), the department and faculty cover tuition, living, and travel expenses.
- A physics review course and a clinical review course for the ABR core exam are fully reimbursed.





Welcome to Norwalk Hospital

In order to serve the lower Fairfield County community's healthcare needs well into the future, Norwalk Hospital was renovated in 2015—building a new, ambulatory care pavilion. This project provided additional space and modern facilities for the ever-growing ambulatory services.

Of note, Norwalk Hospital received the John D. Thompson Award for Excellence in 2019.

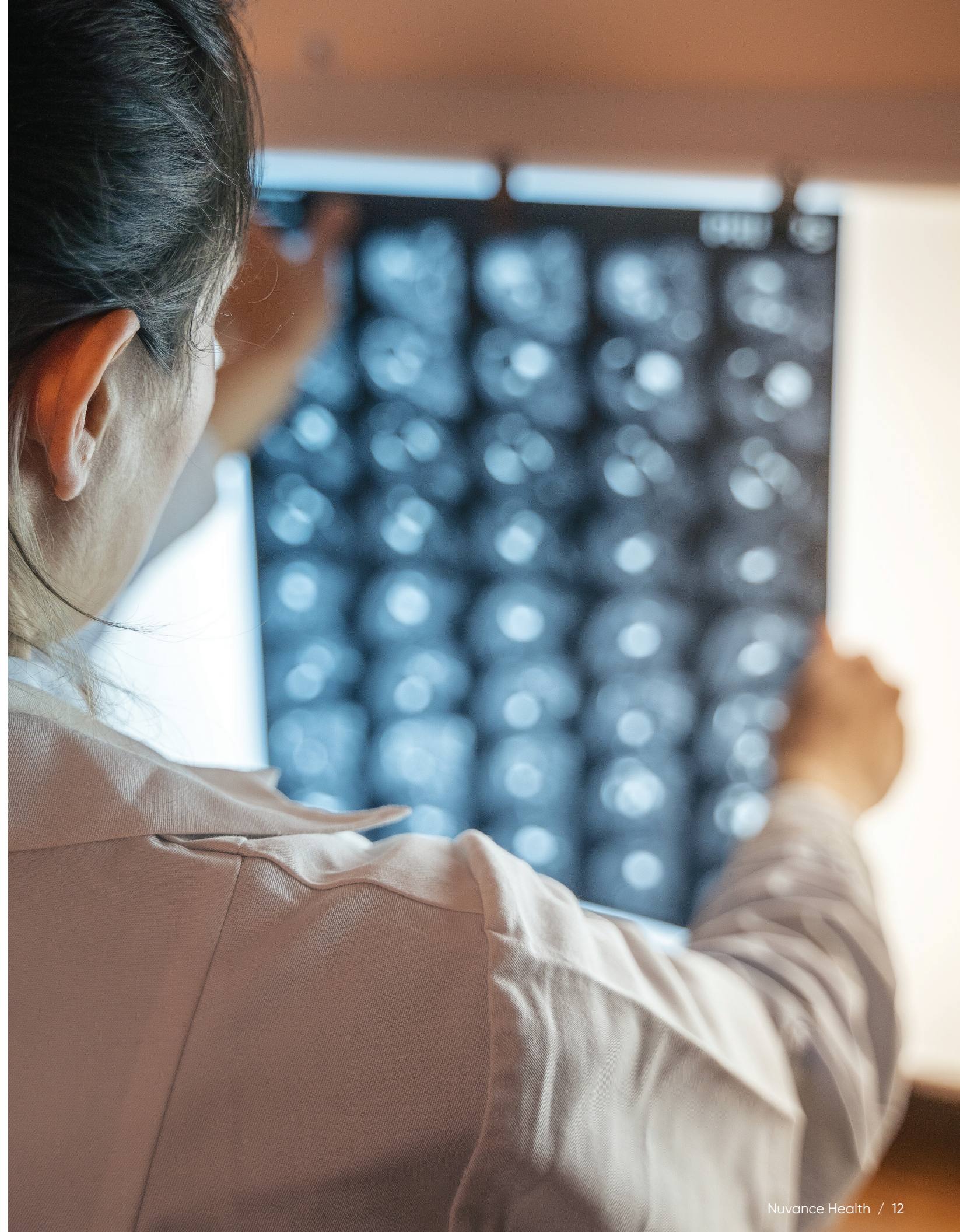
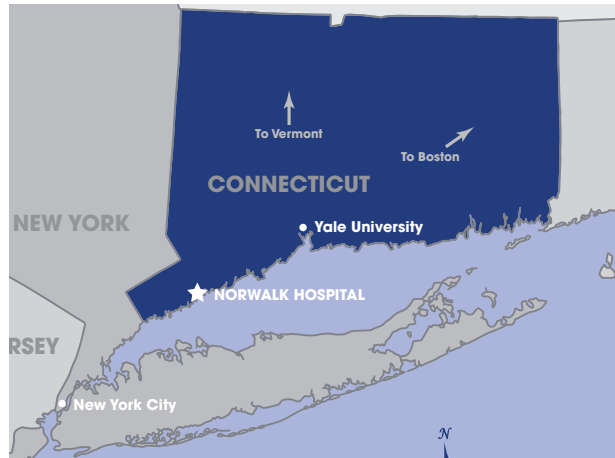
The region

Norwalk, Connecticut, is a coastal city in Fairfield County within easy commuting distance of New York City. The City of Norwalk itself, and the communities surrounding it, is attractive, safe and diverse with many cultural and recreational opportunities.

Just minutes outside of Norwalk is the beautiful Connecticut countryside. In addition, the Long Island Sound is just a stone's throw from the hospital—providing beach, swimming, boating and fishing activities.

New York City, with all that it has to offer, is only 45 minutes away by train or car. Many people who live in Norwalk and the surrounding area work in New York City, commuting daily. New Haven, with Yale University, is about 35 minutes away by car or train.

The climate is moderate with dramatic seasons. The school systems are excellent. The variety of restaurants, retail stores, theaters and museums are outstanding. It is hard to imagine a more ideal environment in which to live and work.

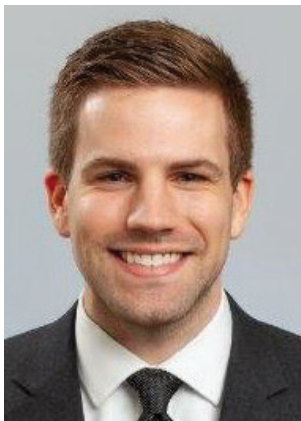


Present residents



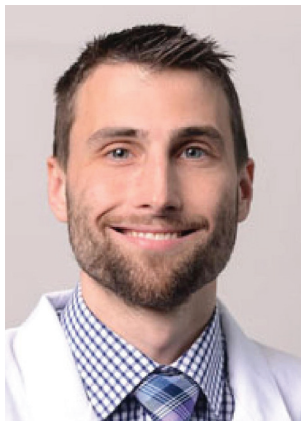
Stephen Carter, MD

College: University of Missouri, MO
Medical School: St. George's University School of Medicine
Internship: Richmond University Medical Center, NY



Landon Melchior, MD

College: University of North Dakota, ND
Medical School: University of North Dakota School of Medicine and Health Sciences
Internship: University of North Dakota School of Medicine and Health Sciences, ND



Steven Wojtkiewicz, DO

College: Suffolk University, MA; Drexel University, PA
Medical School: University of New England College of Osteopathic Medicine
Internship: Berkshire Medical Center, MA



Brandon Funk, MD

College: Boston University, MA
Medical School: Touro College of Osteopathic Medicine
Internship: Garnet Health Medical Center, NY



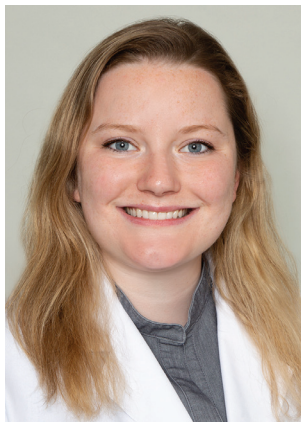
Matthew Homs, DO

College: Rutgers University, NJ
Medical School: Rocky Vista University School of Osteopathic Medicine
Internship: Inspira Health Network, NJ



Behnaz Khazai, MD

College: NODET, Iran
Medical School: Mashhad University of Medical Sciences
Internship: Hurley Medical Center-Michigan State University Program, MI



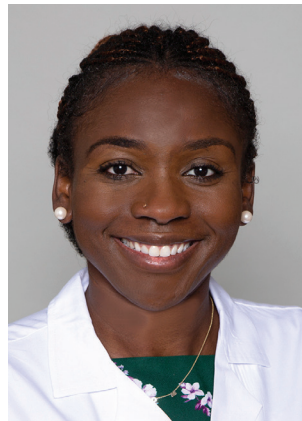
Rebecca Joseph, MD

College: University of Rochester, NY
Medical School: University of Connecticut School of Medicine
Internship: Saint Mary's Hospital, CT



Liam du Preez, MD

College: University of Utah, UT
Medical School: University of Vermont
Internship: Greenwich Hospital-YNH, CT



Diane Moliva, MD

College: Concordia College at Moorhead, MN; McGill University, CAN
Medical School: Ross University School of Medicine
Internship: University of Minnesota, MN



Ryan Narbutas, MD

College: University of California, Los Angeles, CA
Medical School: Drexel University College of Medicine
Internship: Hemet Global Medical Center, CA

Residents' email addresses

Stephen Carter, MD	PGY-5	stephen.carter@nuvancehealth.org
Landon Melchior, MD	PGY-5	landon.melchior@nuvancehealth.org
Matthew Homs, DO	PGY-4	matthew.homs@nuvancehealth.org
Behnaz Khazai, MD	PGY-4	behnaz.khazai@nuvancehealth.org
Diane Moliva, MD	PGY-4	cecilediane.molivaanendaga@nuvancehealth.org
Ryan Narbutas, MD	PGY-3	ryan.narbutas@nuvancehealth.org
Steven Wojtkiewicz, DO	PGY-3	steven.wojtkiewicz@nuvancehealth.org
Brandon Funk, MD	PGY-2	brandon.funk@nuvancehealth.org
Rebecca Joseph, MD	PGY-2	rebecca.joseph@nuvancehealth.org
Liam du Preez, MD	PGY-2	liam.dupreez@nuvancehealth.org

Outcomes

Fellowship placement

2023

- University of Missouri – Musculoskeletal Imaging
- University of California, Los Angeles (UCLA) – Abdominal Imaging/Cross Sectional IR

2022

- University of Wisconsin – Musculoskeletal Imaging
- University of California – Abdominal Imaging & Ultrasound
- University of California Irvine – Musculoskeletal Imaging

2021

- Northwell Health – Breast & Body Imaging
- Thomas Jefferson University – Body Imaging

2020

- Mount Sinai Hospital – Neuroradiology
- Northwell Health – Breast & Body Imaging
- Beth Israel Deaconess Medical Center – Neuroradiology

2019

- Dartmouth-Hitchcock Medical Center – Interventional Radiology
- Northwell Health – Breast & Body Imaging

2018

- Baylor Medical Center – Breast Imaging
- Northwell Health – MSK
- University of California – MSK

2017

- University of California, San Francisco – Neuroradiology

2016

- Yale New Haven Hospital – Neuroradiology
- University of California, San Francisco – Body Imaging

2015

- Stanford University – Pediatric Radiology
- Medical University of South Carolina – Vascular/Interventional
- Yale New Haven Hospital – Neuroradiology

2014

- NYU Langone Medical Center – Neuroradiology
- Beth Israel Deaconess Medical Center – Neuroradiology
- Yale New Haven Hospital – Nuclear Medicine

2013

- Columbia University – Neuroradiology
- Duke University – Neuroradiology

2012

- University of Maryland Medical Center – Thoracic Imaging
- St. Francis Hospital and Medical Center – Body Imaging
- University of Southern California – Vascular/Interventional

2011

- University of Maryland – Women's Imaging
- Mount Sinai Hospital – Neuroradiology

2010

- Hospital for Special Surgery – Musculoskeletal
- University of Southern California – Vascular/Interventional

2008

- Yale New Haven Hospital – Women's Imaging
- Thomas Jefferson University – Neuroradiology

2007

- Thomas Jefferson University – Body Imaging
- Columbia University – Body Imaging

2006

- Yale New Haven Hospital – Abdominal Imaging
- Yale New Haven Hospital – Women's Imaging

2005

- Columbia University – Neuroradiology
- Mallinckrodt Institute of Radiology – Nuclear Medicine

Contact information



Chair, Department of Radiology:
Seema Bakhru, MD

Phone: (203) 739-7665
Fax: (203) 796-7667
Mail: Department of Radiology
Norwalk Hospital
34 Maple Street
Norwalk, CT 06856



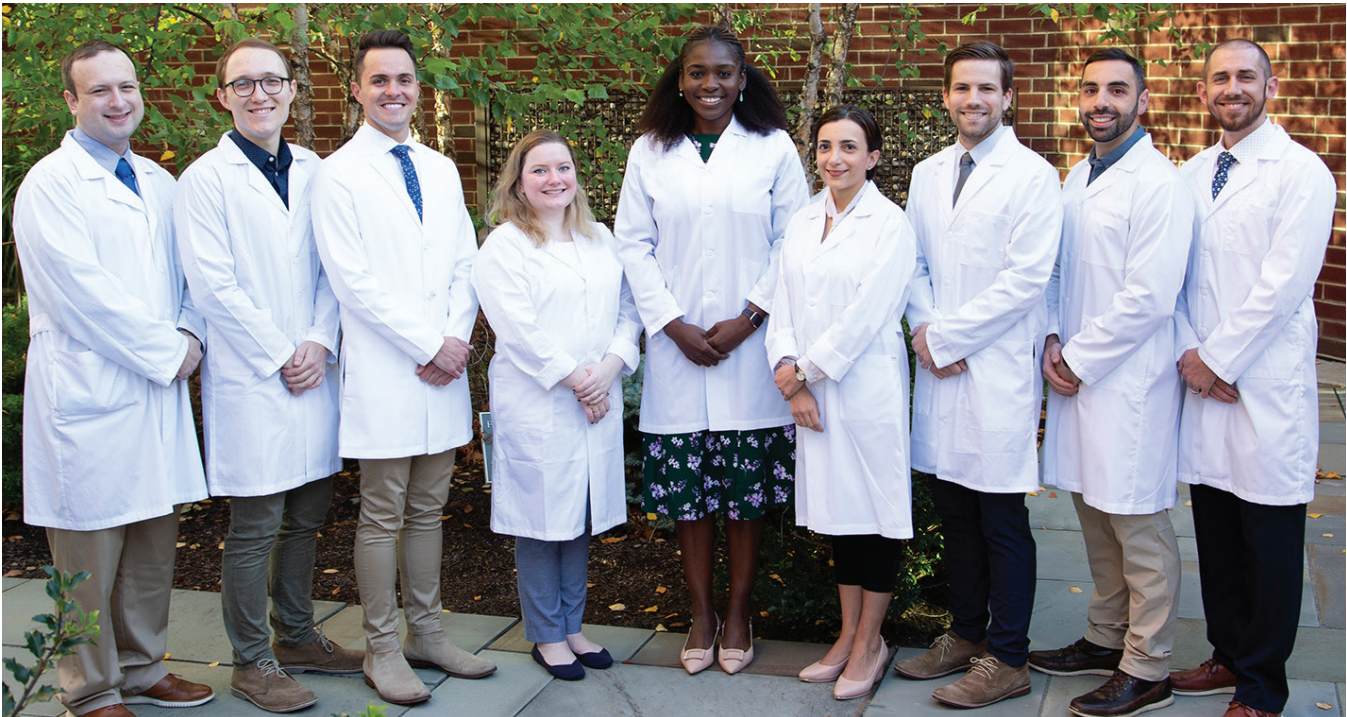
Program Director:
Francis T. Flaherty, MD

Phone: (203) 852-2715 or
(203) 852-3122
Fax: (203) 855-3967
Email:
francis.flaherty@nuvancehealth.org



Program Coordinator:
Anila Dalipi

Phone: (203) 852-2715
Fax: (203) 855-3967
Email: anila.dalipi@nuvancehealth.org
Mail: Department of Radiology
Norwalk Hospital
34 Maple Street
Norwalk, CT 06856



Faculty



Francis T. Flaherty, MD

Undergrad: Amherst College, MA
Medical School: New York University School of Medicine
Internship: New York University Medical Center, NY
Residency: New York Hospital/Cornell University Medical Center, NY
Fellowship: Body Imaging—Thomas Jefferson University Hospital, PA



Stephen Sherry, MD

Undergrad: Carnegie Mellon University, PA
Medical School: Boston University School of Medicine
Internship: Roger Williams Medical Center, RI
Residency: University of Pittsburgh Medical Center
Fellowship: Neuroradiology—Massachusetts General Brigham Hospital, MA



Seema Bakhru, MD

Undergrad: Brandeis University, MA
Medical School: Dartmouth Medical School
Internship: Roger Williams Medical Center Internal Medicine, RI
Residency: Hartford Hospital, CT
Fellowship: Breast Imaging—Beth Israel Deaconess Medical Center, MA

Faculty



Michael Hollander, MD

Undergrad: Hobart College, NY
Medical School: Royal College of Surgeons, Ireland & Georgetown University School of Medicine
Internship: Hackensack University Hospital, NJ
Residency: Beth Israel Medical Center, NY
Fellowship: Neuroradiology—Thomas Jefferson University Hospital, PA



Todd Everett, MD

Undergrad: Brown University, RI
Medical School: Brown University School of Medicine
Internship: Roger Williams Medical Center
Residency: University Hospital and Medical Center, SUNY at Stony Brook, NY
Fellowship: Interventional Radiology—Columbia-Presbyterian Medical Center, NY



Gilda Boroumand, MD

Undergrad: New York University, College of Arts & Science, NY
Medical School: New York University School of Medicine
Internship: Yale New Haven Hospital, CT
Residency: Thomas Jefferson University Hospital, PA
Fellowship: Breast Imaging—Yale Medicine, CT



Edward Gillis, DO

Undergrad: Hofstra University, NY
Medical School: New York College of Osteopathic Medicine
Internship: New York Presbyterian-Queens Hospital
Residency: University of Connecticut
Fellowship: Musculoskeletal Imaging—Duke University Medical Center



Andrew Colucci, MD

Undergrad: Boston College, MA
Medical School: Boston University School of Medicine
Internship: Brockton Hospital, MA
Residency: Beth Israel Deaconess Medical Center, MA
Fellowship: Neuroradiology—Beth Israel Deaconess Medical Center, MA



Dugho Jin, DO

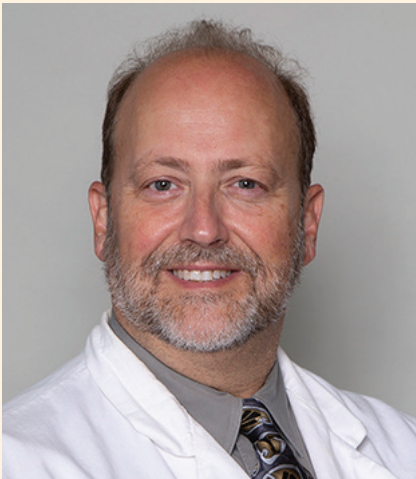
Undergrad: University of Bridgeport, CT
Medical School: University of New England College of Osteopathic Medicine, ME
Internship: Manchester Memorial Hospital
Residency: Norwalk Radiology Residency, CT
Fellowship: Abdominal Imaging—Thomas Jefferson University Hospital

Faculty



Thorsten Krebs, MD

Undergrad: Washington University, MO
Medical School: SUNY Downstate Medical Center
Internship: The Staten Island Hospital, NY
Residency: Columbia–Presbyterian Medical Center, NY
Fellowship: Abdominal Imaging and Interventional Radiology—Massachusetts General Hospital, MA



Eric Reiner, DO

Undergrad: Rensselaer Polytechnic Institute, NY
Medical School: University of New England College of Osteopathic Medicine, ME
Internship: Hospital of St. Raphael, CT
Residency: Albany Medical Center Hospital, NY
Fellowship: Interventional Radiology—Yale New Haven Hospital, CT



Kristina Nowitzki, MD

Undergrad: Mount St. Mary’s College, CA
Medical School: Keck School of Medicine at University of Southern California, Los Angeles, CA
Internship: Kaiser Permanente, CA
Residency: University of Massachusetts Medical School, MA
Fellowship: Cross Sectional Imaging – Johns Hopkins, MD



Fatejeet S. Sandu, MD

Undergrad: Duke University, NC
Medical School: Emory University School of Medicine
Internship: Yale School of Medicine, CT
Residency: University of California, San Francisco, CA
Fellowship: Body Imaging—San Francisco General Hospital, CA; Interventional Radiology—Emory University Hospital/Grady Hospital, GA



Madhavi Raghu, MD

Undergrad: SUNY Buffalo, NY
Medical School: SUNY Buffalo School of Medicine
Internship: Yale School of Medicine, CT
Residency: Pennsylvania Hospital, University of Pennsylvania Health System, PA
Fellowship: Breast and Body Imaging—Yale New Haven Hospital, CT

Our Reason for Being

We exist to...

Pursue Impossible

So we can improve the lives of every person in our community.

Our Values

Personal

Being top caliber starts with how we treat and respect people. So we see each patient, listen, then speak and act with purpose and compassion.

Imaginative

Discovering what's possible for our patients and our communities means challenging the expected. So we seek better, never settle and inspire curiosity.

Agile

Progress is only achieved through change. So we better serve our patients by overcoming barriers, pivoting with efficiency and staying open-minded.

Connected

Achievements don't happen in silos. So we share ideas, communicate clearly, act with consistency and work together as a unified team to care for those who need us.

Redefine Expected

Changing assumptions by challenging traditional healthcare experiences.

Therefore
we are
committed
to being...

Because
we strive to...